

NOW PRE-LEASING CLASS A OFFICE SPACE

MURFREESBORO'S PREMIER DOWNTOWN ADDRESS AT E. COLLEGE ST. & CHURCH ST.

\$27 PSF NNN

Available 1st Qtr. 2021



- One East College is a landmark Downtown Murfreesboro mixed-use development where the past meets the future featuring 52,000 square feet of office space along with a boutique hotel, retail, residential condo and event spaces & frontage on East College, Church, Lytle, and Spring Streets
- Office Space Leasing for \$27 PSF NNN with a \$50 PSF Buildout Allowance
- Attached Parking Garage
- Incredible downtown location walkable to the new Rutherford County Judicial Complex and the Murfreesboro Square
- Less than 5 minutes to MTSU and less than 10 minutes to I-24

John Harney
615.542.0715
johnh@parks-group.com
TNLIC #221569

THE PARKS GROUP
COMMERCIAL REAL ESTATE



LOCATION



LOCATION



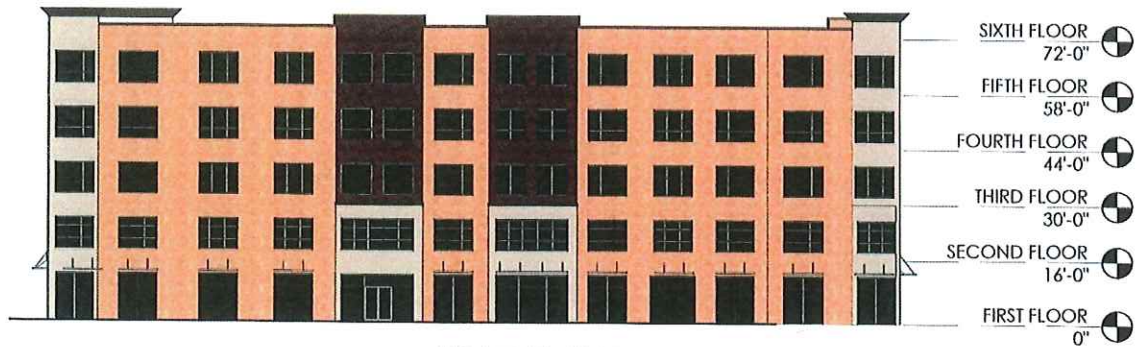
RENDERING CONCEPTS



OFFICE SPACE ELEVATION CONCEPTS



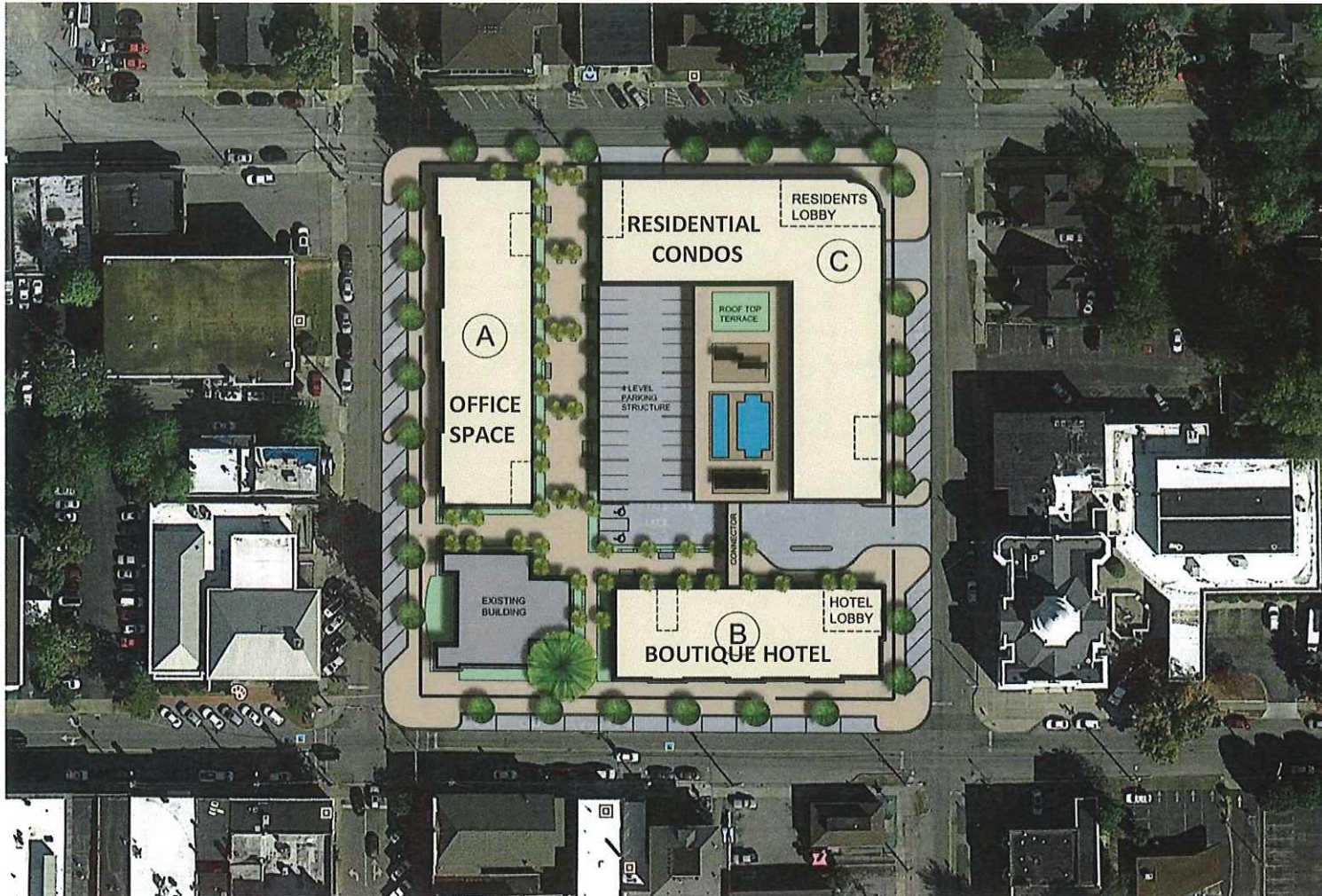
WEST ELEVATION



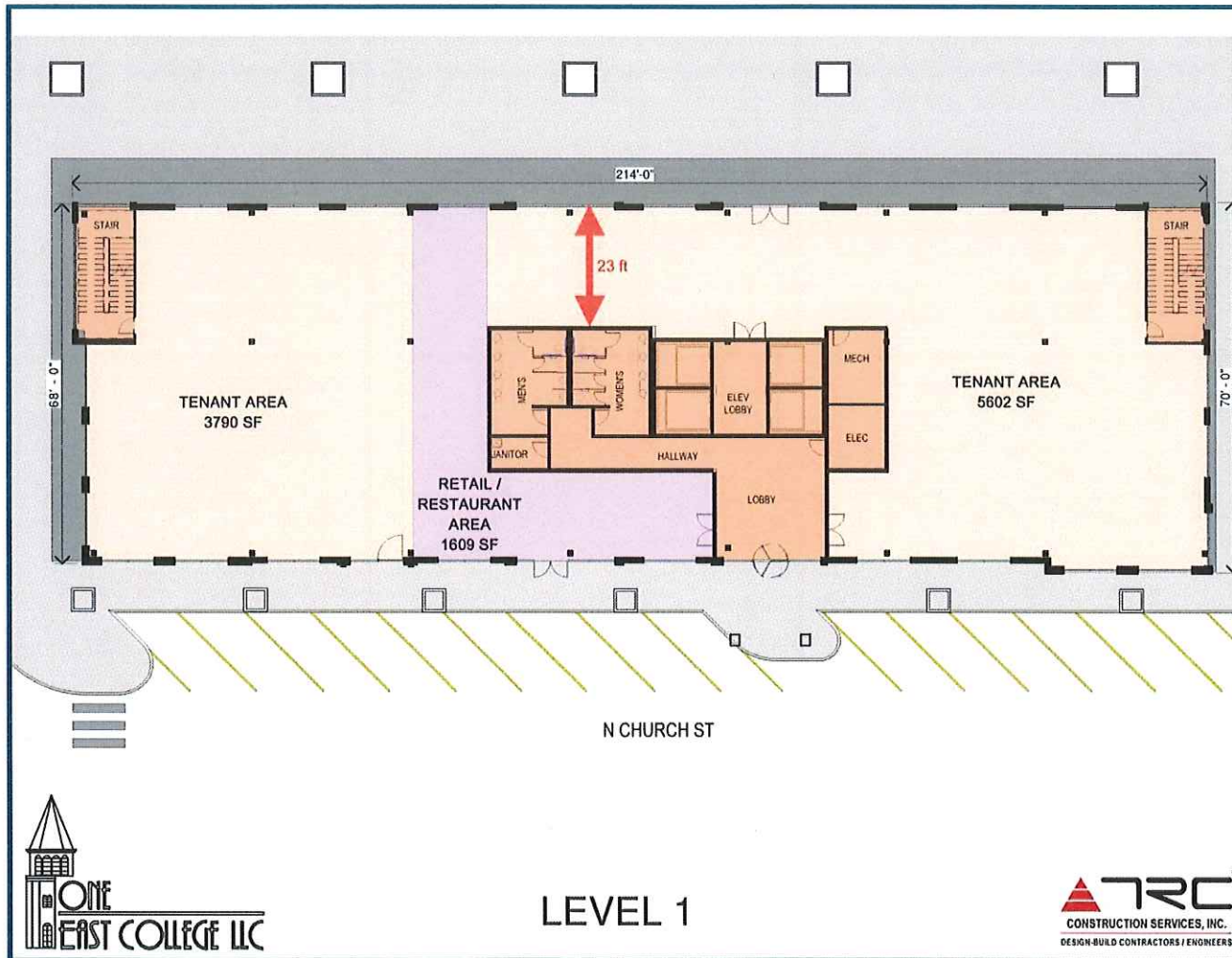
EAST ELEVATION



AERIAL VIEW OF BUILDING



OFFICE SPACE FLOORPLAN LEVEL 1



OFFICE SPACE FLOORPLAN LEVEL 2

