

4.5 Acres on Rock Springs Road & Jim Parker Drive | Smyrna

PROPERTY FEATURES



- Road Frontage on Rock Springs Road & Jim Parker Drive
- 1 mile from I-24/Sam Ridley Interchange
- Zoned C-2 Commercial Highway Services
- All Utilities
- Located directly behind Publix Shopping Center
- Convenient to the heart of Smyrna retail area including Tri-Star StoneCrest Medical Center and Smyrna Town Center with anchor store—Super Target
- One block from Home Depot

4.5 Acres | \$6.00 SF | \$1,176,000

THE PARKS GROUP
COMMERCIAL REAL ESTATE



Leslie White, CCIM, MAI

615.542.1996 Direct

LesW@Parks-Group.com

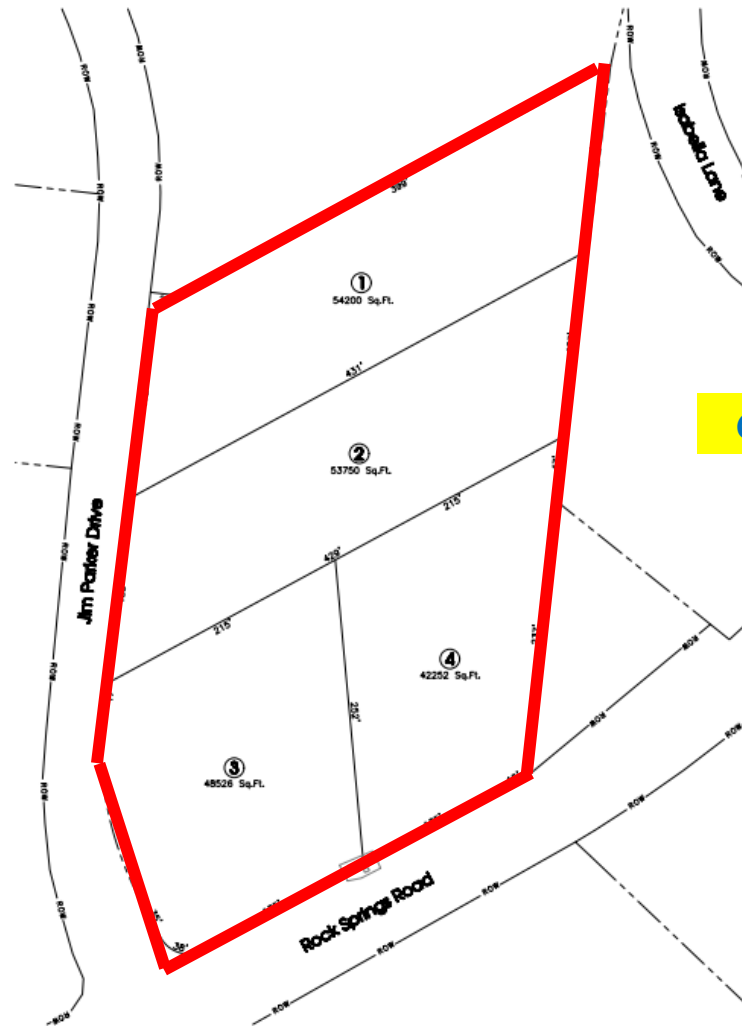
License #254870

Information believed to be accurate but not guaranteed. Buyer and Buyer's agent should independently verify all information prior to submitting any offer to purchase.



1535 West Northfield Boulevard, Suite 7 | Murfreesboro, Tennessee 37129 | 615.896.4045

4.5 Acres on Rock Springs Road & Jim Parker Drive | Smyrna



THE PARKS GROUP
COMMERCIAL REAL ESTATE



Leslie White, CCIM, MAI
615.542.1996 Direct
LesW@Parks-Group.com
License #254870



Information believed to be accurate but not guaranteed. Buyer and Buyer's agent should independently verify all information prior to submitting any offer to purchase.



1535 West Northfield Boulevard, Suite 7 | Murfreesboro, Tennessee 37129 | 615.896.4045

4.5 Acres on Rock Springs Road & Jim Parker Drive | Smyrna



4.5 Acres | \$6.00 SF | \$1,176,000

THE PARKS GROUP
COMMERCIAL REAL ESTATE



Leslie White, CCIM, MAI
615.542.1996 Direct
LesW@Parks-Group.com
License #254870

Information believed to be accurate but not guaranteed. Buyer and Buyer's agent should independently verify all information prior to submitting any offer to purchase.

1535 West Northfield Boulevard, Suite 7 | Murfreesboro, Tennessee 37129 | 615.896.4045

