

# 4.5 Acres on Rock Springs Road & Jim Parker Drive | Smyrna

## PROPERTY FEATURES

- Road Frontage on Rock Springs Road & Jim Parker Drive
- 1 mile from I-24/Sam Ridley Interchange
- Zoned C-2 Commercial Highway Services
- All Utilities
- Located directly behind Publix Shopping Center
- Convenient to the heart of Smyrna retail area including Tri-Star StoneCrest Medical Center and Smyrna Town Center with anchor store—Super Target
- One block from Home Depot



Four Sites | .97 — 1.3 Acres | \$7.50 — \$11 SF

**THE PARKS GROUP**  
COMMERCIAL REAL ESTATE



Leslie White, CCIM, MAI  
615.542.1996 Direct  
LesW@Parks-Group.com  
License #254870

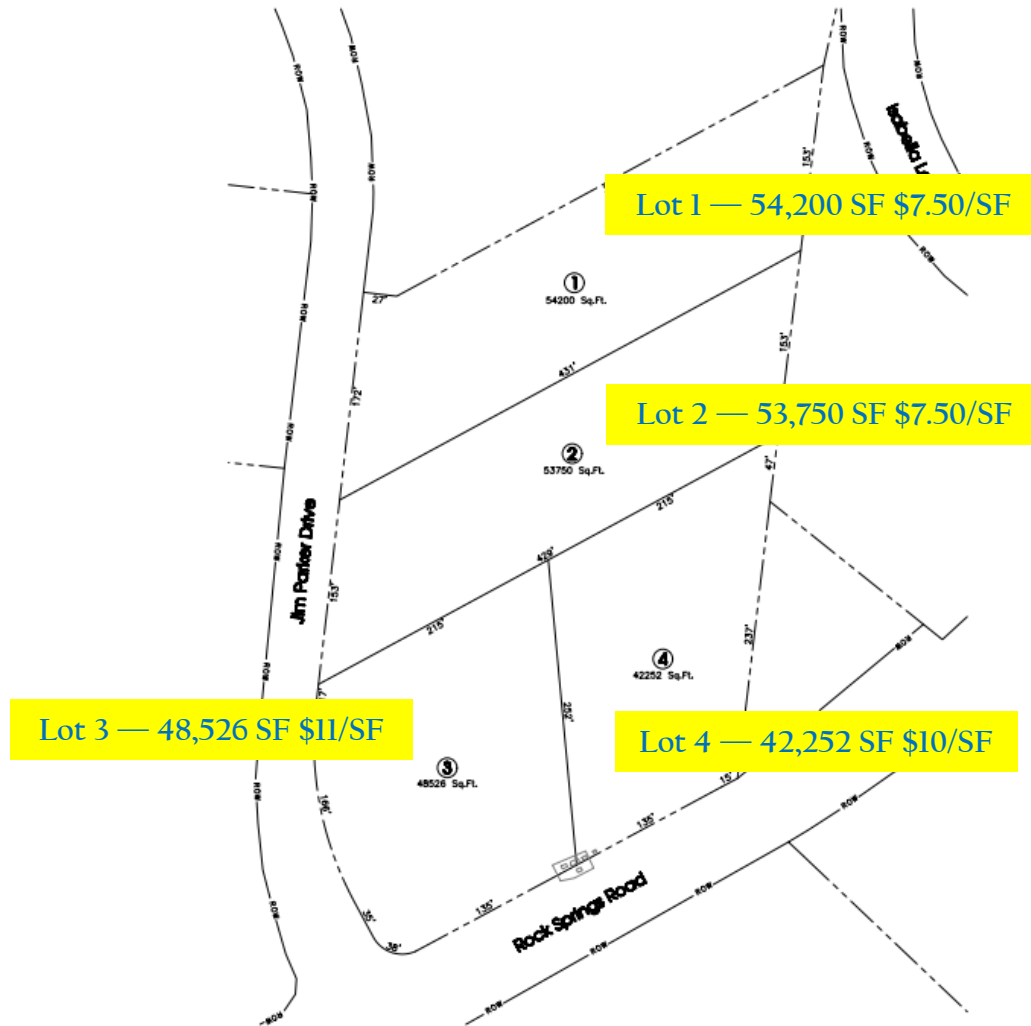


Information believed to be accurate but not guaranteed. Buyer and Buyer's agent should independently verify all information prior to submitting any offer to purchase.



1535 West Northfield Boulevard, Suite 7 | Murfreesboro, Tennessee 37129 | 615.896.4045

# 4.5 Acres on Rock Springs Road & Jim Parker Drive | Smyrna



**THE PARKS GROUP**  
COMMERCIAL REAL ESTATE



Leslie White, CCIM, MAI  
615.542.1996 Direct  
LesW@Parks-Group.com  
License #254870



Information believed to be accurate but not guaranteed. Buyer and Buyer's agent should independently verify all information prior to submitting any offer to purchase.



1535 West Northfield Boulevard, Suite 7 | Murfreesboro, Tennessee 37129 | 615.896.4045



# 4.5 Acres on Rock Springs Road & Jim Parker Drive | Smyrna



Four Sites | .97 — 1.3 Acres | \$7.50 — \$11 SF

**THE PARKS GROUP**  
COMMERCIAL REAL ESTATE



Leslie White, CCIM, MAI  
615.542.1996 Direct  
LesW@Parks-Group.com  
License #254870



Information believed to be accurate but not guaranteed. Buyer and Buyer's agent should independently verify all information prior to submitting any offer to purchase.

1535 West Northfield Boulevard, Suite 7 | Murfreesboro, Tennessee 37129 | 615.896.4045